

PAINE 45

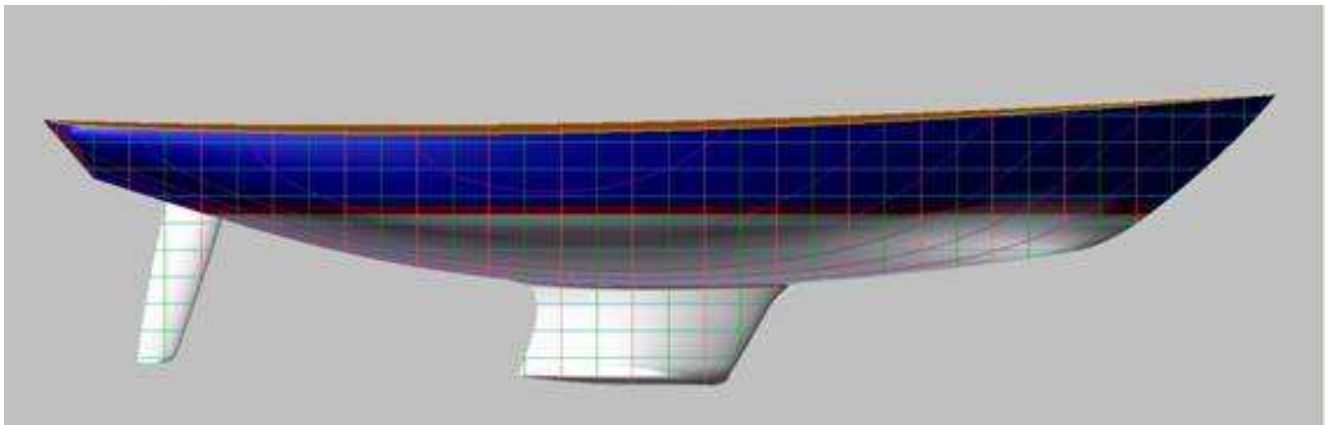
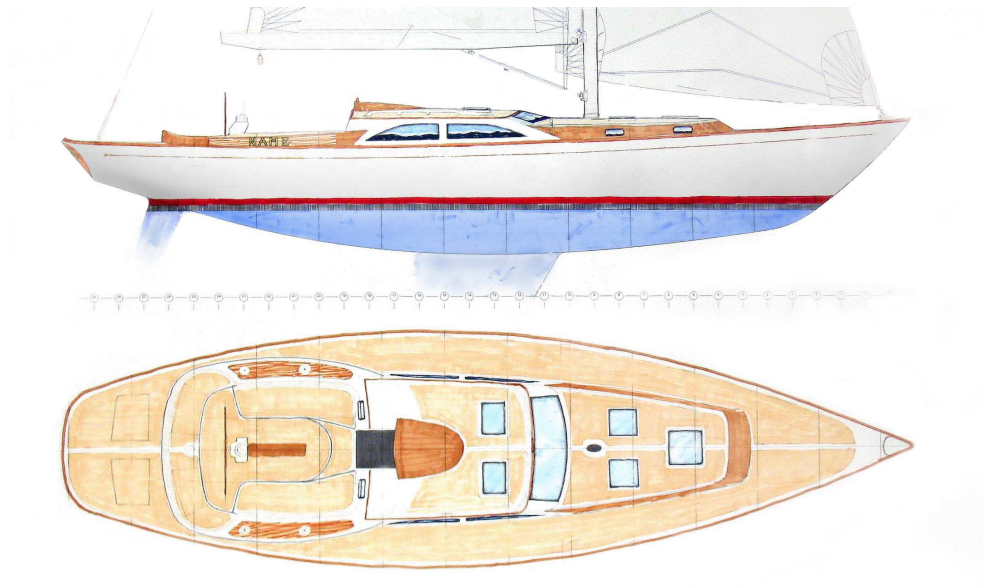
RACER / DAYSAILOR / CRUISER

DIMENSIONS

LOA:	45' 0"
LWL:	33' 2"
BEAM	12' 6"
DRAFT, CRUISER	5' 11"
DRAFT, RACER	7' 2"
DISP, CRUISER	22,560 lbs
DISP, RACER	21,070 lbs
BALLAST, CRUISER	8000 lbs
BALLAST, RACER	7300 lbs
SAIL AREA, CRUISER	850 sq ft
SAIL AREA, RACER	891 sq ft
D/L RATIO, CRUISER	270
D/L RATIO, RACER	259
SA/D RATIO, CRUISER	17.03
SA/D RATIO, RACER	18.69



A FINE LOOKING YACHT WITH REAL PERFORMANCE POTENTIAL.



OUR PRELIMINARY RENDERINGS AND COMPUTER MODEL GIVE SOME IDEA OF THE DESIGN OBJECTIVES... A TRADITIONAL SHARP ENDED HULL WITH BEAUTIFUL LONG OVERHANGS, CHOICE OF MODERATE DRAFT "PAINE KEEL" (shown above) OR FLARED RACING KEEL, AND A CARBON COMPOSITE SPADE RUDDER.

Celebrity Yachting Limited have initiated the design of the exciting new PAINÉ 45, aimed at the worldwide market for a fun to sail racer/cruiser. The shipyard will build this along with their other designs at custom quality levels but in series production at the shipyards, which are located in Mainland China and Thailand. The workforce is highly motivated and skilled, and the local supply of highest quality teak second to none. The PAINÉ 45 will exhibit the talents of the workers and these yachts will be built to high standards of finish. Teak decks will be standard, as will vacuum bagged varnished teak transom inlays, and lightweight but exquisitely finished varnished teak interiors. Hulls and decks will be vacuum bagged cored fiberglass. The yachts will be furnished fully equipped for racing or cruising using American and European gear.

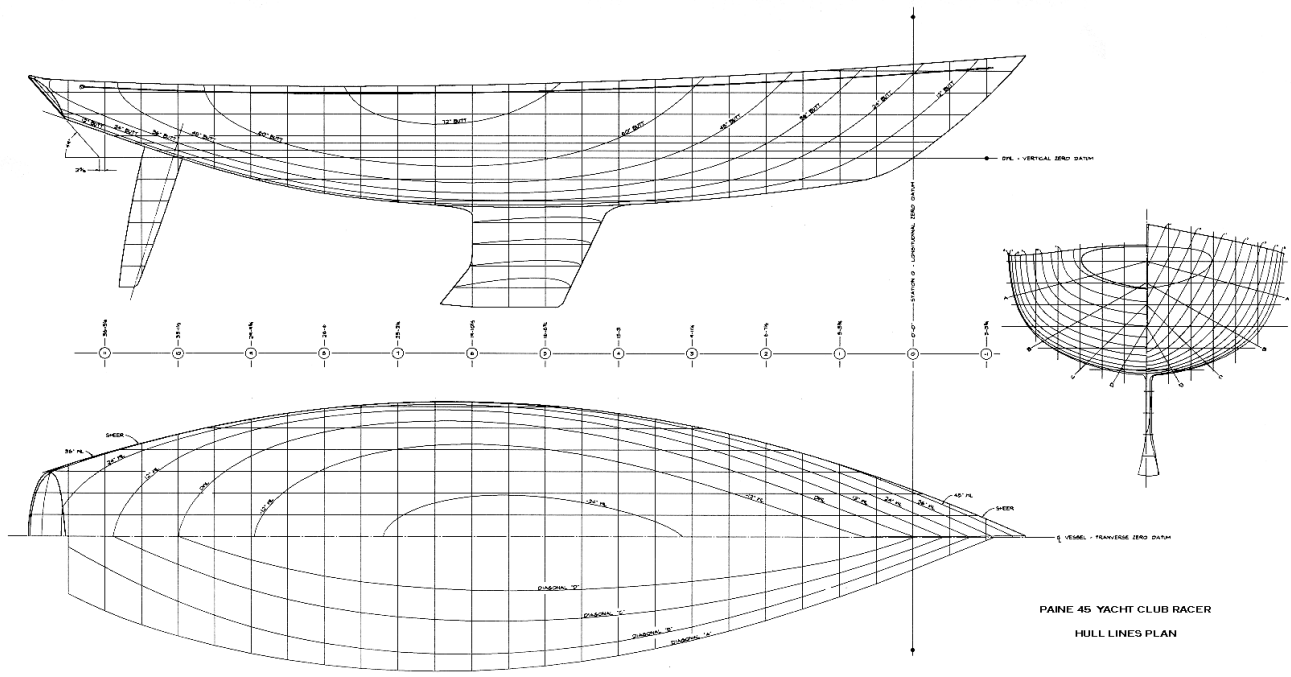
The Paine 45 will be offered in two versions. The long distance cruiser/racer arrangement is illustrated above. It has a long deckhouse and raised pilothouse and a luxurious interior suitable for use on long distance races and cruises. Its extensive interior could sleep six in luxury. The galley is huge with plenty of storage and worktop area. The head is accessible ensuite from fore or aft cabins and includes a beautifully tooled molded fiberglass shower stall.

The Paine 45 is in many ways comparable to the new generation of "daysailors" being offered by America's highest quality builders, but with extensive interior amenities. Unlike many of the "daysailors" it is properly fitted with lifelines, pulpit and pushpit so that it may be safely taken offshore. The jib is roller furling and is of minimal overlap for ease in

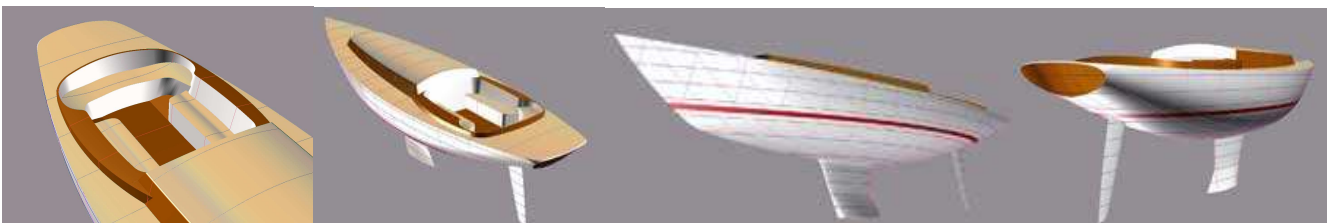
sheeting. The mainsail is hoisted by an electric winch. Thus it will be quick and simple to set sail for brief outings without physical effort. And at day's end the mainsail will stow effortlessly within a "Park Avenue" type boom. The anchor and its stainless steel retrieval crane will hide within a purpose designed foredeck locker until called upon for use.

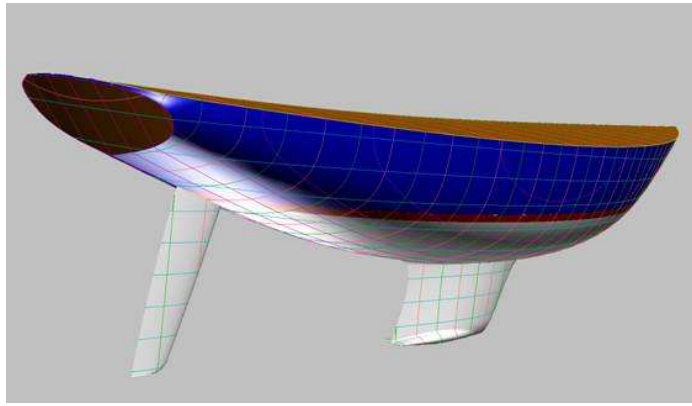
In terms of sales strategy the yachts will be primarily targeted to the far east where new marinas, dockominiums and yes, yacht clubs are being built outside many of the larger cities, with few yachts readily available to fill them. While the majority of PAINE 45's are likely initially to be sold in China, Malaysia and other countries of the region, there is an American sales office where buyers will find a spectacular yacht at an impressive value for money.

The high performance racing version is under development and will be lighter and will have a simple, more open interior than that shown here. This deep-keeled speedster will be rigged for the owner or race organizers to choose between a 106% blade jib and 150% light air genoa. It will be rigged to handle the skipper's choice of asymmetrical or poled spinnakers. The cockpit has a central mainsheet control console, just like the latest generation of pure racing yachts, where the mainsheet trimmer can adjust mainsail traveler, sheet, outhaul and backstay tension from a single position.



THE P45 HULL LINES ARE BASED UPON PAINE'S SUPERB ONE-OFF RACING YACHT "ERICA" BUILT BY FRENCH AND WEBB OF BELFAST MAINE. ERICA IS SUPERBLY FAST UNDER THE COMMAND OF CHUCK PAINE AND HIS GO-FAST FRIENDS. THE PAINE 45 IS A SLIGHTLY DETUNED, MORE FAMILY FRIENDLY VERSION ON OFFER AT A LOWER PRICE.





THE PAINE 45, STUNNINGLY BEAUTIFUL FROM ANY ANGLE.
THE TRANSOM WILL BE OF VARNISHED SELECT GRAIN TEAK,
WITH A GOLD LEAF NAME AND HAIL OF THE OWNER'S CHOICE.

USA Dealer:

Celebrity Yachts
Newport Shipyard
One Washington Street
Newport, R.I. 02840
401 855 4355

gjw@bluenoseyachts.com